

Ball bearing butt hinge

Description

Ball bearing butt hinge, round corners, stainless steel brushed, with removable pin

Productgroup

1076

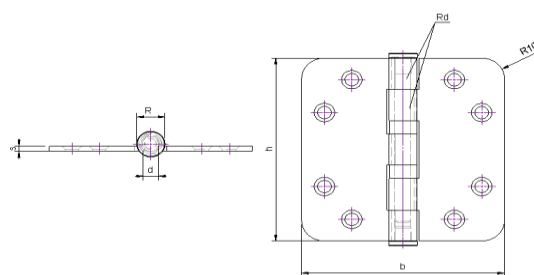
Photo



Article number

1076.80.089K

Technical drawing



Scope of application

Windows and Doors

Technical data

Material

| | |
|----------------|--------------------------|
| Hinge | Stainless steel |
| Finish surface | Brushed |
| Bearing | Heavy duty ball bearings |
| Angle | Round corners |
| Pin | Stainless steel |
| Weight | 0,23 kg |
| Packaging Unit | 10 pcs |

Sizing

| h | b | s | R | d | rd |
|-------|-------|--------|-------|------|------|
| 89 mm | 89 mm | 2,5 mm | 12 mm | 7 mm | 5 mm |

Certificates

CE norm EN 1935: 374013011



Components

| | |
|---------|--------------|
| Pin | A221.80.002V |
| Button | A320.80.015V |
| Bearing | A460.80.002V |

Product features

Heavy duty ball bearings
Star-shaped, reduce the risk of screw breaking
Flat head
with removable pin

Maximum load

| | | |
|---------------------------|-------|--------|
| Number of hinges per door | 3 | 4 |
| Door weight | 90 kg | 100 kg |

Assembly instructions

Screws to be used

| | |
|---------|-------------|
| Number | 8 pcs |
| Measure | ∅ 4.5*40 mm |

Mounting Manual



Scharnieren