

## Description

Friction-bearing hinge, round corners, stainless steel brushed, with removable pin

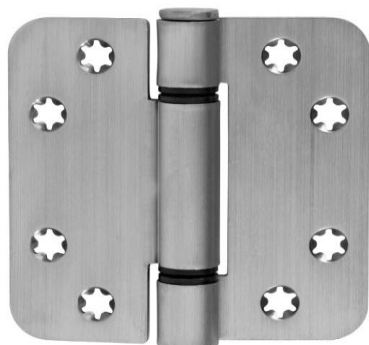
## Productgroup

1065

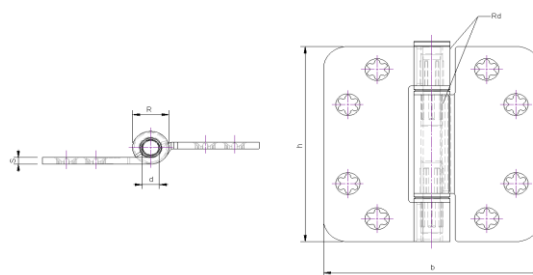
## Article number

1065.80.089K

## Photo



## Technical drawing



## Scope of application

Windows and Doors

## Product features

Star-shaped, reduce the risk of screw breaking  
Flat head  
with removable pin

## Technical data

### Material

Hinge	Stainless steel
Finish surface	Brushed
Bearing	Friction-bearing
Angle	Round corners
Pin	Stainless steel
Weight	0,28 kg
Packaging Unit	10 pcs

## Sizing

h	b	s	R	d	rd
89 mm	89 mm	3 mm	14 mm	7 mm	3 mm

## Maximum load

Number of hinges per door	3	4
Door weight	140 kg	160 kg

## Certificates

CE norm EN 1935: 476013013



## Components

Pin	110320
Bearing	110321

## Assembly instructions

Screws to be used

Number	8 pcs
Measure	∅ 4.5*40 mm

Mounting Manual



Scharnieren