

## Description

Butt hinge, round corners, steel galvanized, with removable pin

## Productgroup

1052

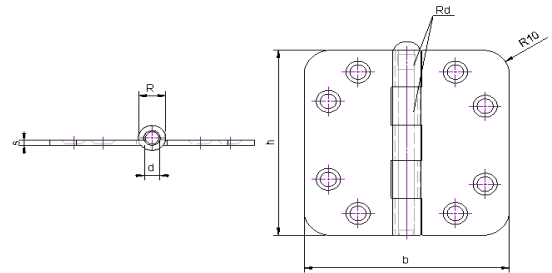
## Article number

1052.20.089K

## Photo



## Technical drawing



## Scope of application

Windows and Doors

## Technical data

### Material

Hinge	Steel
Finish surface	Galvanized
Bearing	Bearing-free
Angle	Round corners
Pin	Steel
Weight	0,21 kg
Packaging Unit	10 pcs

## Product features

Star-shaped, reduce the risk of screw breaking  
Roundhead  
with removable pin

## Sizing

h	b	s	R	d	rd
89 mm	89 mm	2,5 mm	12 mm	7 mm	5 mm

## Maximum load

Number of hinges per door	3	4
Door weight	70 kg	80 kg

## Certificates

CE norm EN 1935:273013010



## Components

Pin A 201.20.004 V

## Assembly instructions

Screws to be used

Number 8 pcs  
Measure  $\varnothing$  4,5\*40 mm

Mounting Manual



Scharnieren